

- Items to be completed by contractor - See Notes Above & Details
1. Voids and cementitious crack repair
 2. Repair/replace broken recirc line
 3. Skimmer repair
 4. Root intrusion damage repair
 5. ADA lift addition
 6. New handrails and addition of ADA handrail at pool steps
 7. Chemical controller addition
 8. Increase backwash funnel size
 9. Additional pipe supports to be added
 10. Provide electrical bonding test to verify all metallic items added are bonded

- GENERAL SHEET NOTES:**
1. Existing conditions are noted to best of ability with information provided to Engineer. Contractor to verify any and all existing conditions and to notify Engineer if any discrepancies are found
 2. All dimensions shown in plan and details are approx., Contractor to field verify all dimensions and notify Engineer if any discrepancies are found
 3. All metallic items should be bonded per electrical code NEC 680

FLORENCE SWIMMING POOL
IMPROVEMENTS
FLORENCE, CO - 2026

Revisions:		
#	Description	Date

Seal:

JEFF BARTLEY-ENGINEER
LICENSE #15118

Date: 01-14-2026 Job #: 26-501

Drawn: TKB Checked: JAB

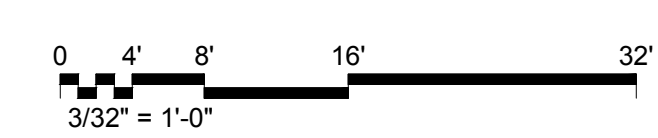
Issue: CONSTRUCTION DOCUMENTS

POOL DEMO &
REVISIONS
PLAN

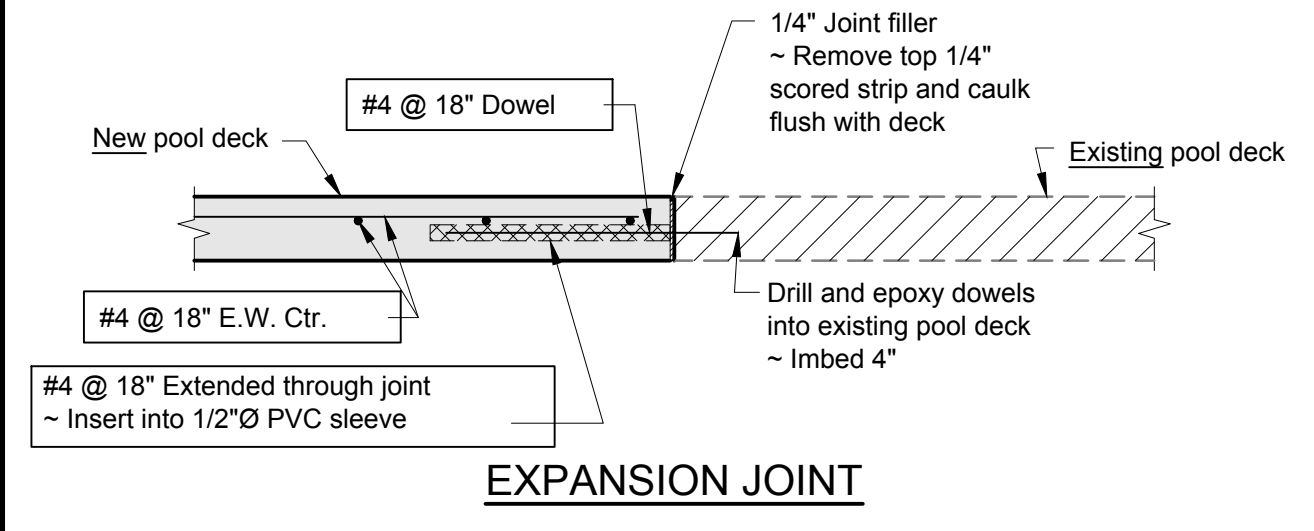
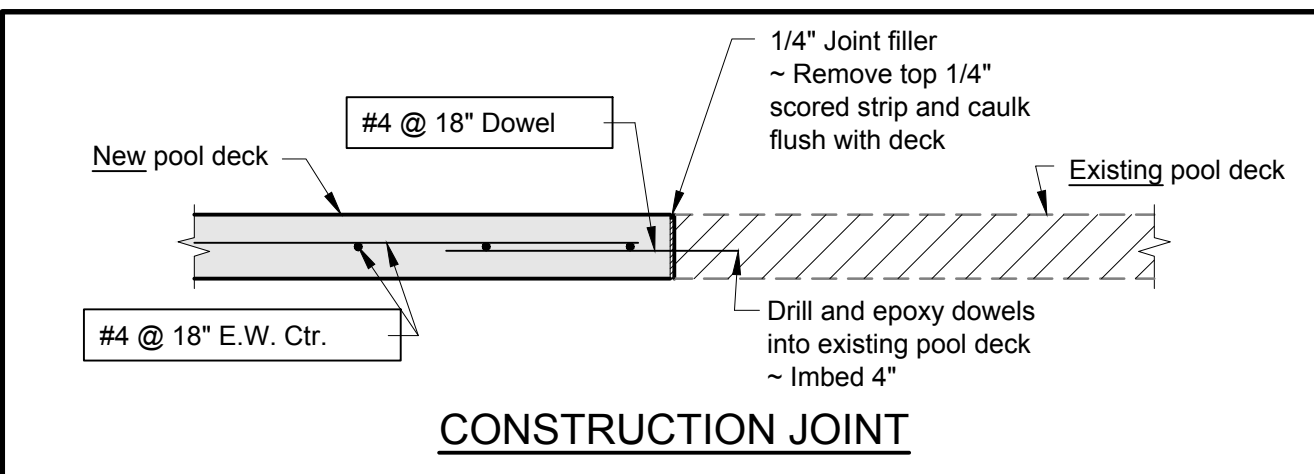
SP-P1

Waters Edge Aquatic Design
© 2026

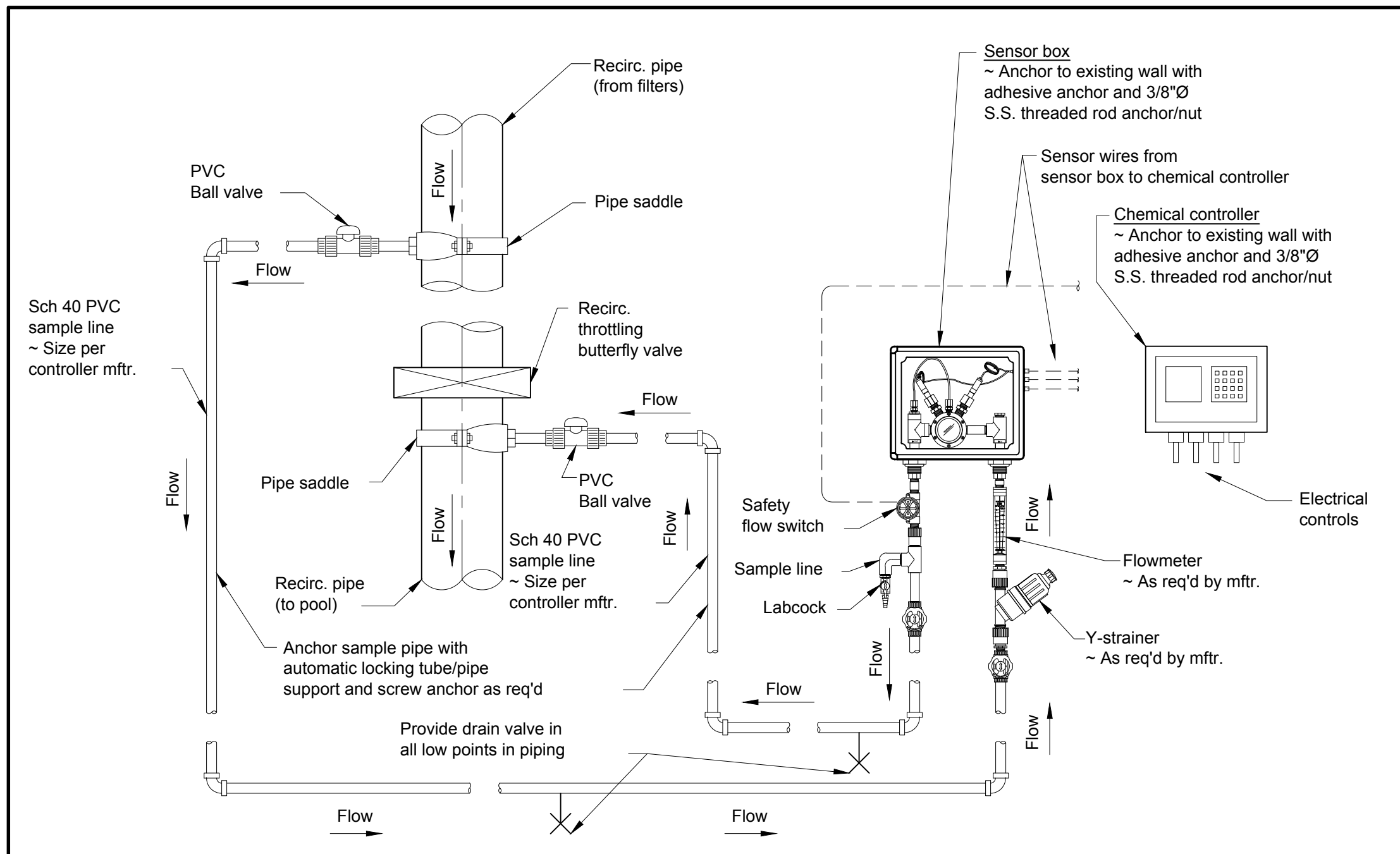
A POOL DEMO PLAN
Scale: 3/32"=1'-0"



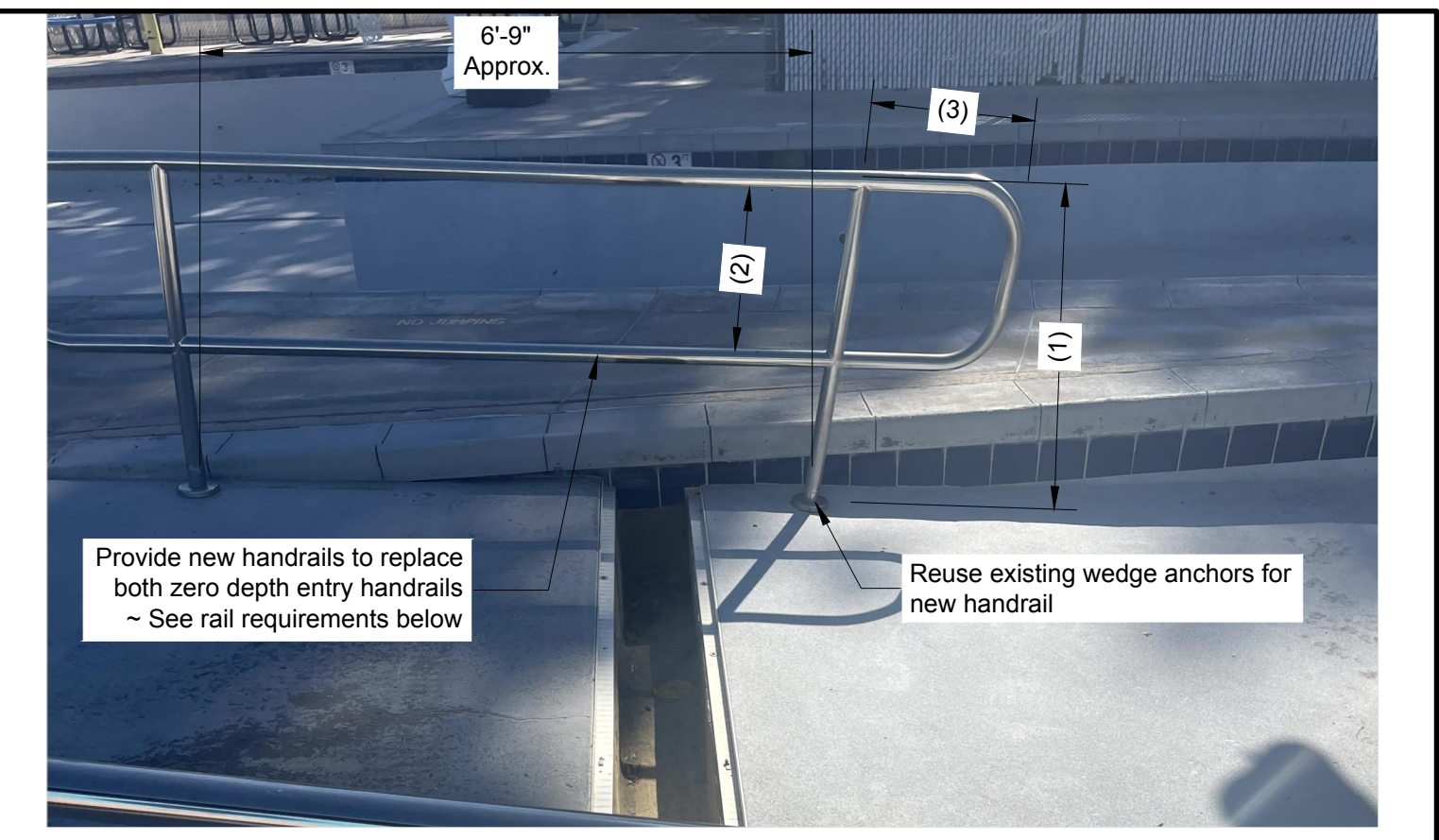
B POOL IMPROVEMENTS PLAN
Scale: 3/32"=1'-0"



POOL DECK AT EXISTING POOL DECK JOINT DETAIL
Scale: 1"=1'-0"



NOTES:
Chemical controller shall be wired to control:
1. pH chemical feeder



RAIL REQUIREMENTS
(1) - 3'-0" from pool floor to top of rail
(2) - 12" between top rail and bottom rail
(3) - 1'-10" between post and end of rail
- Radius as required

GENERAL NOTE
- All dimensions approx. based on information gathered. Contractor to field verify all dimensions and notify engineer if discrepancies are identified.

F ZERO DEPTH ENTRY HANDRAIL DETAIL
N.T.S.



MAXIMUM PIPE SUPPORT SPACING (Feet) **			
Pipe Size	Sch 40 PVC	Sch 80 PVC	Copper (L&K)
1/2"	3.5	4.5	5.0
3/4"	4.0	4.5	5.0
1"	4.5	5.0	6.0
1 1/4"	4.5	5.0	7.0
1 1/2"	5.0	5.5	8.0
2"	5.0	6.0	8.0
2 1/2"	5.5	6.0	9.0
3"	6.5	7.0	10.0
4"	6.5	7.5	12.0
5"	-	-	13.0
6"	7.5	9.0	14.0
8"	8.5	9.5	16.0
10"	9.0	10.0	18.0
12"	9.5	11.5	19.0
14"	-	-	-
16"	-	-	-

* Maximum support spacing of 20 Ft.
Provide a minimum of 1 hanger as close as practical to the joint behind the bell, and at changes of direction and branch connections.

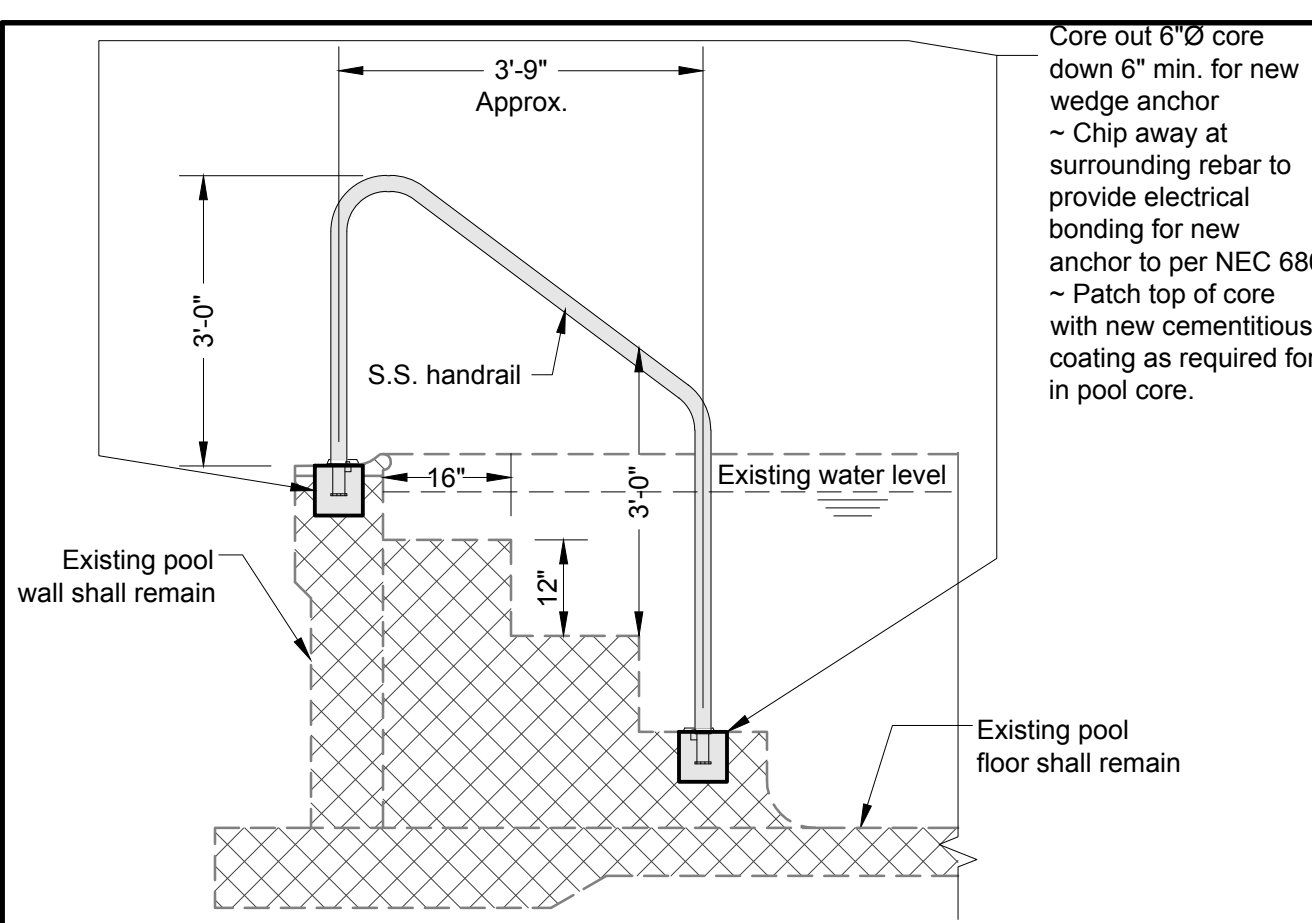
** Unless shown or noted otherwise

All pipe supports shall be S.S., HDG, or FRP, and in X-Y-Z directions.
All hardware shall be S.S.

B PIPE SUPPORT - EXISTING CONDITION
N.T.S.



D BACKWASH FUNNEL - EXISTING CONDITION
N.T.S.



GENERAL NOTES
- All dimensions approx. based on information gathered. Contractor to field verify all dimensions and notify engineer if discrepancies are identified.
- Where applicable, reuse existing wedge anchors for new handrail

E POOL STEPS HANDRAIL DETAIL
Scale: 1/2"=1'-0"

FLORENCE SWIMMING POOL IMPROVEMENTS
FLORENCE, CO - 2026

Revisions:		
#	Description	Date

Seal:

JEFF BARTLEY-ENGINEER
LICENSE #15118

Date: 01-14-2026 Job #: 26-501

Drawn: TKB Checked: JAB

Issue: CONSTRUCTION DOCUMENTS

POOL DEMO & REVISIONS DETAILS